

# Clipsal X

As stylish as your world



MADE TO LAST  
**ONE**  
MILLION  
CLICKS

[se.com/in](http://se.com/in)

Life Is On

**Schneider**  
Electric

# Bringing style to every home

Say goodbye to the boring old designs and switch on style, with Clipsal X, the vibrant range of switches from Schneider Electric. As colourful as your world, as chic as your taste, these switches are made to match every whim. Clipsal X comes with an array of colours and textures to complement all kinds of home decor and styles.





Rich Leather



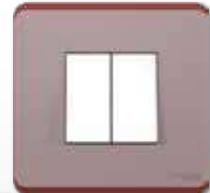
Butterscotch



Sheesham



Slate



Pink Flamingo



Terracotta



Charcoal Black



Blue Sapphire



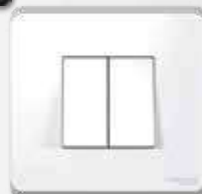
Metallic Copper



Navy Blue



Grey



White



# Quality that's a class apart

There are some innovations that change the direction of our time. They define the standard to which the rest look up to. Clipsal X is that innovation.

Designed after intensive research and development, these switches go through 16 rigorous tests before they reach you. From heat resistance to anti-aging. From humidity resistance to shock resistance. We ensure to leave no stone unturned to deliver excellence with every click. We even go as far as guaranteeing the durability of a million clicks, because we know everyone promises quality only a few live up to it. So here's us wishing you a very warm welcome to higher quality and safety standards.

MADE TO LAST  
**ONE**  
MILLION  
CLICKS



# Bringing safety to every family

Schneider Electric has always aimed to innovate using the latest technology in the field and our digital solutions in energy and automation increases efficiency, safety and sustainability.

Say hello to the latest version of

**Clipsal X, India's first antiviral switches.**



Developed using the state of the art technology, these switches are designed to ensure highest safety in our everyday lives. And when you take all that safety and quality, add elegance to its build, you've got something you just have to switch to.



# Bringing style to convenience

Clipsal X switches are made with a contemporary sloped plate design to make them seamlessly blend with the wall. Clipsal X switches are not only stylish, but also functional. They are designed to last up to 1 million clicks. The switches are made from flame retardant and UV stabilized material to ensure added safety.

Clipsal X is also the softest sounding switch for unobtrusive switching. It comes with a large plate overhang to cover the imperfections in plastering or painting around. Clipsal X switches have a glossy band which provides ease to the user in cleaning the dust accumulated on the top of the plate.

Style, safety, convenience and longevity – Clipsal X has it all!





# Bringing affordability to luxury

Designed for modern sensibilities, the colours of the Clipsal X range and its trendy dual-tone variants will complement the look of any home perfectly. What's more, the elegant wood, slate and leather textures with a satin finish to suit different styles of decor. Featuring USB charging points and international socket options, this is a switch range that has been designed for modern users, whether they are at home or at work. The Clipsal X range of switches also features IoT technology, which means that they can be controlled on the phone. That's not all, they are Alexa and Google Home compatible, which means they can also be operated by voice.



# Xtra Style

- Vibrant and youthful colours and textured finishes that can stand out or blend in.
- Contemporary sloped design that blends seamlessly with the wall.
- Textured finishes to match most different styles of decor – Wood, Slate & Leather.



# Xtra Strong

- Made to last for over 1 million clicks.
- 10A rated switches to enable Grouping – many loads can be added.
- UV Stabilized to avoid decolouring.

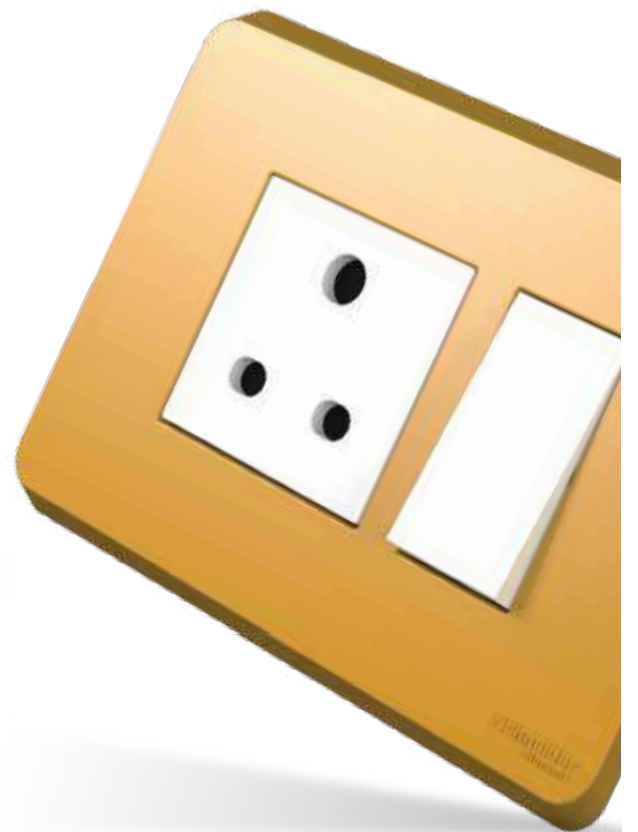
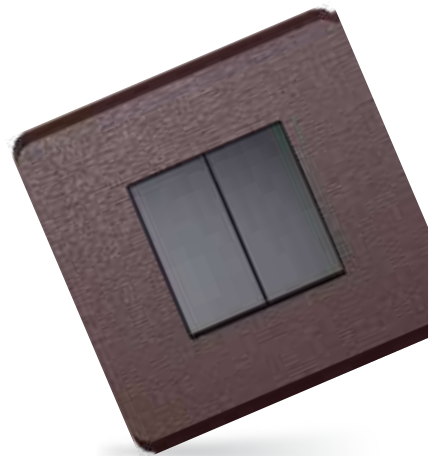
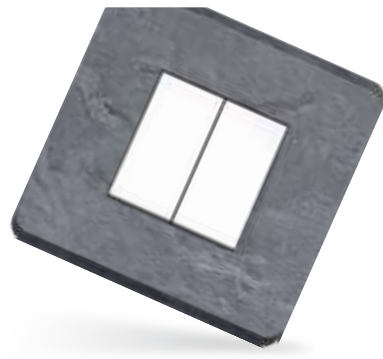


# Xtra Comfort

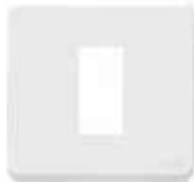
- Noiseless clicking for unobtrusive switching.
- Smooth finish which avoids light reflection off the surface.
- Glossy Band making it easy to clean.
- Large plate overhang to hide wall and paint imperfections.







# Clipsal X - As Stylish As Your World



White



Coke Grey



Metallic Copper



Charcoal Black

Description	Reference for White	Reference for Coke Grey	Reference for Metallic Copper	Reference for Charcoal Black
<b>Cover Plates</b>				
1M or 2M Grid & 1M Cover Frame	CPXCP1M_WE	CPXCP1M_GY	CPXCP1M_MC	CPXCP1M_CB
1M or 2M Grid & 2M Cover Frame	CPXCP2M_WE	CPXCP2M_GY	CPXCP2M_MC	CPXCP2M_CB
3M Grid & 3M Cover Frame	CPXCP3M_WE	CPXCP3M_GY	CPXCP3M_MC	CPXCP3M_CB
3M Uni Grid & 3M Cover Frame	CPXCP3MU_WE	CPXCP3MU_GY	CPXCP3MU_MC	CPXCP3MU_CB
4M Grid & 4M Cover Frame	CPXCP4M_WE	CPXCP4M_GY	CPXCP4M_MC	CPXCP4M_CB
6M Grid & 6M Cover Frame	CPXCP6M_WE	CPXCP6M_GY	CPXCP6M_MC	CPXCP6M_CB
8M Grid & 8M Cover Frame, Horizontal	CPXCP8ML_WE	CPXCP8ML_GY	CPXCP8ML_MC	CPXCP8ML_CB
8M Grid & 8M Cover Frame, Square	CPXCP8MSQ_WE	CPXCP8MSQ_GY	CPXCP8MSQ_MC	CPXCP8MSQ_CB
9M Cover Frame	CPXCP9M_WE	CPXCP9M_GY	-	-
9M Grid & 9M Cover Frame	-	-	-	CPXCP9M_CB
12M Grid & 12M Cover Frame	CPXCP12M_WE	CPXCP12M_GY	CPXCP12M_MC	CPXCP12M_CB
16M Cover Frame	CPXCP16M_WE	CPXCP16M_GY	-	-
18M Grid & 18M Cover Frame	CPXCP18M_WE	-	-	-

Please contact Customer Care Center for Stockable and Non stockable status of references.

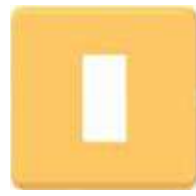
NORMAL STOCK ITEMS

W.E.F. January 11, 2021

# Clipsal X - As Stylish As Your World



Navy Blue



Butterscotch



Terracota



Blue Sapphire

Description	Reference for Navy Blue	Reference for Butterscotch	Reference for Terracota	Reference for Blue Sapphire
<b>Cover Plates</b>				
1M or 2M Grid & 1M Cover Frame	CPXCP1M_NB	CPXCP1M_BT	CPXCP1M_TC	CPXCP1M_BS
1M or 2M Grid & 2M Cover Frame	CPXCP2M_NB	CPXCP2M_BT	CPXCP2M_TC	CPXCP2M_BS
3M Grid & 3M Cover Frame	CPXCP3M_NB	CPXCP3M_BT	CPXCP3M_TC	CPXCP3M_BS
3M Uni Grid & 3M Cover Frame	CPXCP3MU_NB	CPXCP3MU_BT	CPXCP3MU_TC	CPXCP3MU_BS
4M Grid & 4M Cover Frame	CPXCP4M_NB	CPXCP4M_BT	CPXCP4M_TC	CPXCP4M_BS
6M Grid & 6M Cover Frame	CPXCP6M_NB	CPXCP6M_BT	CPXCP6M_TC	CPXCP6M_BS
8M Grid & 8M Cover Frame, Horizontal	CPXCP8ML_NB	CPXCP8ML_BT	CPXCP8ML_TC	CPXCP8ML_BS
8M Grid & 8M Cover Frame, Square	CPXCP8MSQ_NB	CPXCP8MSQ_BT	CPXCP8MSQ_TC	CPXCP8MSQ_BS
12M Grid & 12M Cover Frame	CPXCP12M_NB	CPXCP12M_BT	CPXCP12M_TC	CPXCP12M_PF



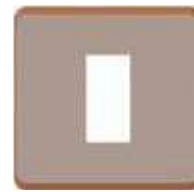
Sheesham



Rich Leather



Slate



Pink Flamingo

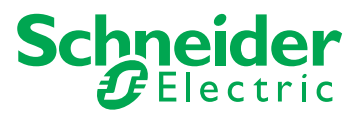
Description	Reference for Sheesham	Reference for Metallic Rich Leather	Reference for Slate	Reference for Pink Flamingo
<b>Cover Plates</b>				
1M or 2M Grid & 1M Cover Frame	CPXCP1M_SH	CPXCP1M_RL	CPXCP1M_SL	CPXCP1M_PF
1M or 2M Grid & 2M Cover Frame	CPXCP2M_SH	CPXCP2M_RL	CPXCP2M_SL	CPXCP2M_PF
3M Grid & 3M Cover Frame	CPXCP3M_SH	CPXCP3M_RL	CPXCP3M_SL	CPXCP3M_PF
3M Uni Grid & 3M Cover Frame	CPXCP3MU_SH	CPXCP3MU_RL	CPXCP3MU_SL	CPXCP3MU_PF
4M Grid & 4M Cover Frame	CPXCP4M_SH	CPXCP4M_RL	CPXCP4M_SL	CPXCP4M_PF
6M Grid & 6M Cover Frame	CPXCP6M_SH	CPXCP6M_RL	CPXCP6M_SL	CPXCP6M_PF
8M Grid & 8M Cover Frame, Horizontal	CPXCP8ML_SH	CPXCP8ML_RL	CPXCP8ML_SL	CPXCP8ML_PF
8M Grid & 8M Cover Frame, Square	CPXCP8MSQ_SH	CPXCP8MSQ_RL	CPXCP8MSQ_SL	CPXCP8MSQ_PF
12M Grid & 12M Cover Frame	CPXCP12M_SH	CPXCP12M_RL	CPXCP12M_SL	CPXCP12M_PF

Please contact Customer Care Center for Stockable and Non stockable status of references.

NORMAL STOCK ITEMS

W.E.F. January 11, 2021

Life Is On



[shop.schneider-electric.co.in](https://shop.schneider-electric.co.in)

**Contact our Customer Care Center:**

Toll free no's: 1800 425 4272 & 1800 103 0011

Timings: 9:00 AM to 8:00 PM

**Schneider Electric India Pvt. Ltd**

9th, Floor, DLF Building No. 10, Tower C,

DLF Cyber City, Phase II,

Gurgaon - 122002

Haryana, India